

## Focus Paihia Community Trust Public Meeting

## What do we hope to get out of this meeting?

- Community support to continue.
- Direction from the community for future projects.
- People to have had a chance to have a say.
- Group discussion and Feedback.

## AGENDA

- \* Who are we?
- \* What we've achieved so far.
- \* Update - Lucy Williams Reserve, CCTV, Parking.
- \* Funding.
- \* Future Projects - Village Green Edge, Williams Rd Lights.
- \* Trust Structure.
- \* The Masterplan.
- \* Discussion and feedback.
- \* Proposal for Waitangi Endowment Forest Mountain Bike Park.

## Who are we?

### Focus Paihia Community Trust (FPCT)

A charitable organisation whose aim, on behalf of the community, is to see Paihia become an exceptional place to live, work and visit.

- \* FCPT came about through the need to improve the look and feel of the town.
- \* With community support and enthusiasm FPCT have endorsed and driven many community projects.
- \* As a result we are enjoying stronger links with each other, better communication and our community pride is growing.
- \* FPCT wants to see Paihia grow and thrive, while retaining its friendly, village like atmosphere.

### FPCT wants to make Paihia shine, through:

- \* Clear leadership and direction by inspiring and uniting our community and celebrating our successes.
- \* Supporting and facilitating our community's ideas for future public developments.
- \* Commenting and providing submissions on future developments.
- \* Having strong relationships and open communication practices.
- \* Encouraging local sustainable employment opportunities.
- \* Promoting and maintaining a rich, versatile and sustainable volunteer base.
- \* Maintaining a sustainable charitable entity while remaining impartial and focused on the bigger picture.

What we have achieved so far...

### Beach Cleaner



### Bay Belle Seating Area



### World Cup Street Party



### Focus Paihia Op Shop



### Maiki Hill



## International Flag Trail



13

## Williams Road Crossing



14

## Village Green Picnic Area



## Paihia's Wee Toilet



15

## Focus Paihia Town Custodians



## Mosaic Chair



18

## Village Green Lighting



## Horotutu – Our Place



20

## Horotutu



## Community Submissions

FPCT make submissions on the following:

- \* FNDC Long Term Plan
- \* FNDC Annual Plan
- \* NRC Long Term Plan
- \* NRC Annual Plan
- \* Draft Proposal for Unitary Authority

22

## Focus Paihia Communications

- \* Paihia Almanac 2014
- \* Focus Paihia Website
- \* In Focus Newsletter
- \* Focus Paihia Facebook
- \* Community Meetings

23

## Update

Lucy Williams Reserve  
CCTV  
Parking



## Funding Where does the money come from?

- \* Focus Paihia Community Trust Op Shop profits go directly to Focus Paihia. This is totally manned by volunteers.
- \* Targeted rates. All residential ratepayers currently pay NZ\$18 each and businesses \$54 each. This goes directly towards town improvements.
- \* Town management contracts, village green and town custodians.
- \* FPCT own the beach cleaner which can be contracted out cleaning beaches in other areas. For example in Tauranga after the Rena disaster.
- \* Donations.

25

## FPCT Financials - LAST YEAR

Total income Year End 31 March 2013 : \$168K

- \* Cash Cow : Op Shop \$78k
- \* Steady Star: Town Custodian \$42k

Total Assets \$329k

- \* Beach Cleaner \$196k
- \* Bank accounts \$113k
- \* Debtors \$19k

Total expenses for same period \$128k

- \* Big Spender: Placemaking \$49k
- \* Op shop costs \$19k
- \* Town custodian \$30k

Total Liabilities \$7k

Interest Income of \$2,200

Retained Earnings \$322k

26

## FPCT Financials – THIS YEAR

Total income To End Feb 2014: \$257K

- \* Cash Cow AGAIN: Op shop with \$76k
- \* Drew down Targeted Rates of \$87k
- \* Beach Cleaner High \$27k
- \* Ipipiri Function for CCTV \$7k

Total Assets \$365k

- \* Beach Cleaner \$196k
- \* Bank accounts \$50k
- \* Debtors \$94k

Total Expenses for same period \$231K

- \* Big Spender: Placemaking \$162K
- \* Op shop Costs: \$23k

Total Liabilities \$15k

Retained Earnings \$350k

Interest Income: \$1,200

BANK ACCOUNTS TODAY:  
\$81k Ready for Winter Projects

27

## Focus Paihia Projects

Focus Paihia does not do the projects, the Drivers and the Community do the projects.

Focus Paihia endorses, facilitates and when appropriate, funds projects.

28

## What is the process for a project?

- \* If you have an idea, you need a driver.  
Every project needs a driver to get off the ground.
- \* Present a proposal to the Board complete with a project budget.
- \* The Board decides whether to proceed if it is in line with FPCT objectives.
- \* If community consent required FPCT seeks community feedback.
- \* Board assists to facilitate the project.

29

## What Focus Paihia can and can't do...

We can facilitate COMMUNITY projects.

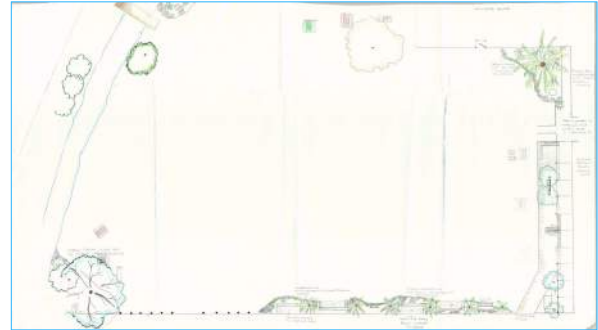
FPCT can not get involved with private projects.

FPCT are available to discuss, liaise and advise private projects.

30

# Winter Projects

Paihia Village Green Design



## Pohutakawa BBQ Area



## Village Green Frontage Boarder and Seating



## Walkway behind Pharmacy Boardwalk and Seating



## Embankment at rear of Green



## Winter Projects

Williams Road Lighting

## Winter Projects

Linking Kings Rd Area with CBD

## How the Trust Operates

## Definition of Charitable Status as in S5(i) of the Charities Act 2005

The four principal divisions of charity:

- \* Trusts for the relief of poverty
- \* Trusts for the advancement of education
- \* Trusts for the advancement of religion
- \* Trusts for other purposes beneficial to the community

41

## The Trust Deed Objects of the Trust

The objects of the trust are:

- \* The educational advancement of the residents of the Paihia District.
- \* Such other matters beneficial to the community of the Paihia District as the Trustees may from time to time decided PROVIDED THAT any such matter must be a charitable purpose as defined by law.
- \* To raise and provide funding to any public or charitable body to assist in all and any of the above objects

42

## The Trust Deed Residents and Tangata Whenua

In pursuing its purposes the Trust shall recognize the views and expectations of the local residents and the tangata whenua of the Paihia District and will, as and when necessary, consult with the appropriate members of these groups.

43

## Managing the Trust Funds

The Trustees manage the Trust Funds and spend these funds in accordance with the Objects of the Trust.

44

## FPCT Company

Focus Paihia Contracting Limited

Registered under the Companies Act 1993

Standard company structure

45

## TRUST REPRESENTATION

### Trust Representation (1)

- \* First Trustees were nominated by community groups heavily involved at the embryo stage of Focus Paihia.
- \* 6 Trustees were nominated and Iwi were invited to make up the desired mix and number, 7.

47

### Trust Representation (2)

Currently the Trust remains a volunteer group with representation from:

- \* Business Paihia (1)
- \* Paihia Resident and Ratepayers Association (2)
- \* Paihia School Board of Trustees (1)
- \* Paihia Haven of History (1)
- \* Local Iwi (1)

48



## Trust Representation (3)

- The Trust can call for nominations when there is a vacancy.
- Under the Trust Deed nominations for a position on the Board is by way of a nomination in writing endorsed with the consent of the nominee.
- The term of office of a Trustee is 3 years.
- Any trustee whose term of appointment has expired is eligible for re-appointment.
- Retiring Trustees will be replaced with what the Board considers to be an appropriate nomination from the various community/groups.
- Trustees are appointed by the Board.

49

## Trust Representation (4)

- \* Representation from the local community - many groups to choose from.
- \* Lots of scope when needing to replace Trustees.
- \* In the future the FPCT Board may move to one representative per group on the Board.

50

## New Trustees

- \* Recently The FPCT Board have replaced David Rogers, the Paihia School Board Trustee with the new incoming Principal, Jane Lindsay.
- \* A new Iwi Trustee has been appointed by Waitangi Marae, Adelaide Rameka.
- \* Another vacancy has arisen with the resignation of Scott Sutherland.  
Nominations of suitable candidates will be called for, to be considered, to fill this position.

51

## The Masterplan

- \* Provides a vision of a long term plan to aspire to.
- \* The community contributed and supported the general outline depicted.
- \* This needs to be explored further in the near future, but in the mean time... are people still generally supportive of the vision of the Masterplan?

52



## Discussion

Feedback

Proposal for  
Waitangi Endowment Forest  
Mountain Bike Park